

Name: Datum:

Wir rechnen bis 100 (+)

1. Rechne!

$4 + 2 = \square$

$5 + 3 = \square$

$3 + 4 = \square$

$40 + 20 = \square$

$50 + 30 = \square$

$30 + 40 = \square$

$42 + 20 = \square$

$54 + 30 = \square$

$36 + 40 = \square$

$47 + 20 = \square$

$51 + 30 = \square$

$38 + 40 = \square$

$44 + 20 = \square$

$59 + 30 = \square$

$34 + 40 = \square$

$7 + 2 = \square$

$2 + 3 = \square$

$4 + 5 = \square$

$70 + 21 = \square$

$20 + 34 = \square$

$40 + 53 = \square$

$70 + 25 = \square$

$20 + 39 = \square$

$40 + 57 = \square$

$70 + 23 = \square$

$20 + 36 = \square$

$40 + 55 = \square$

$70 + 28 = \square$

$20 + 32 = \square$

$40 + 58 = \square$

2. Rechne!

$40 + 35 = \square$

$20 + 28 = \square$

$30 + 46 = \square$

$20 + 35 = \square$

$70 + 28 = \square$

$50 + 46 = \square$

$60 + 35 = \square$

$50 + 28 = \square$

$10 + 46 = \square$

$10 + 35 = \square$

$30 + 28 = \square$

$40 + 46 = \square$

$13 + 40 = \square$

$57 + 30 = \square$

$24 + 70 = \square$

$13 + 80 = \square$

$57 + 10 = \square$

$24 + 50 = \square$

$13 + 60 = \square$

$57 + 40 = \square$

$24 + 20 = \square$

$13 + 50 = \square$

$57 + 20 = \square$

$24 + 60 = \square$

3. Rechne!

$30 + 40 = \square$

$50 + 20 = \square$

$60 + 30 = \square$

$5 + 3 = \square$

$3 + 2 = \square$

$4 + 4 = \square$

$35 + 43 = \square$

$\square + \square = \square$

$\square + \square = \square$

$20 + 60 = \square$

$40 + 40 = \square$

$20 + 30 = \square$

$4 + 2 = \square$

$7 + 1 = \square$

$3 + 6 = \square$

$24 + 62 = \square$

$\square + \square = \square$

$\square + \square = \square$

Lösung

Wir rechnen bis 100 (+)

1. Rechne!

$4 + 2 = 6$

$40 + 20 = 60$

$42 + 20 = 62$

$47 + 20 = 67$

$44 + 20 = 64$

$7 + 2 = 9$

$70 + 21 = 91$

$70 + 25 = 95$

$70 + 23 = 93$

$70 + 28 = 98$

$5 + 3 = 8$

$50 + 30 = 80$

$54 + 30 = 84$

$51 + 30 = 81$

$59 + 30 = 89$

$2 + 3 = 5$

$20 + 34 = 54$

$20 + 39 = 59$

$20 + 36 = 56$

$20 + 32 = 52$

$3 + 4 = 7$

$30 + 40 = 70$

$36 + 40 = 76$

$38 + 40 = 78$

$34 + 40 = 74$

$4 + 5 = 9$

$40 + 53 = 93$

$40 + 57 = 97$

$40 + 55 = 95$

$40 + 58 = 98$

2. Rechne!

$40 + 35 = 75$

$20 + 35 = 55$

$60 + 35 = 95$

$10 + 35 = 45$

$13 + 40 = 53$

$13 + 80 = 93$

$13 + 60 = 73$

$13 + 50 = 63$

$20 + 28 = 48$

$70 + 28 = 98$

$50 + 28 = 78$

$30 + 28 = 58$

$57 + 30 = 87$

$57 + 10 = 67$

$57 + 40 = 97$

$57 + 20 = 77$

$30 + 46 = 76$

$50 + 46 = 96$

$10 + 46 = 56$

$40 + 46 = 86$

$24 + 70 = 94$

$24 + 50 = 74$

$24 + 20 = 44$

$24 + 60 = 84$

3. Rechne!

$30 + 40 = 70$

$5 + 3 = 8$

$35 + 43 = 78$

$20 + 60 = 80$

$4 + 2 = 6$

$24 + 62 = 86$

$50 + 20 = 70$

$3 + 2 = 5$

$53 + 22 = 75$

$40 + 40 = 80$

$7 + 1 = 8$

$47 + 41 = 88$

$60 + 30 = 90$

$4 + 4 = 8$

$64 + 34 = 98$

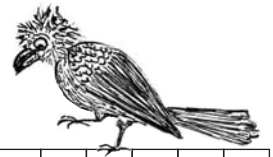
$20 + 30 = 50$

$3 + 6 = 9$

$23 + 36 = 59$

Name: Datum:

Nachbarn helfen (-)



1. Rechne zuerst die Aufgabe in der Mitte!

$54 - 28 = \square \square$

$87 - 48 = \square \square$

$36 - 18 = \square \square$

$54 - 29 = \square \square$

$87 - 49 = \square \square$

$36 - 19 = \square \square$

$54 - 30 = \square \square$

$87 - 50 = \square \square$

$36 - 20 = \square \square$

$54 - 31 = \square \square$

$87 - 51 = \square \square$

$36 - 21 = \square \square$

$54 - 32 = \square \square$

$87 - 52 = \square \square$

$36 - 22 = \square \square$

2. Rechne zuerst die Aufgabe in der Mitte!

$65 - \square \square = \square \square$

$48 - \square \square = \square \square$

$73 - \square \square = \square \square$

$65 - 39 = \square \square$

$48 - 29 = \square \square$

$73 - 49 = \square \square$

$65 - 40 = \square \square$

$48 - 30 = \square \square$

$73 - 50 = \square \square$

$65 - 41 = \square \square$

$48 - 31 = \square \square$

$73 - 51 = \square \square$

$65 - \square \square = \square \square$

$48 - \square \square = \square \square$

$73 - \square \square = \square \square$

3. Rechne zuerst die Aufgabe in der Mitte! – Finde die Nachbaraufgaben!

$\square \square - \square \square = \square \square$

$\square \square - \square \square = \square \square$

$\square \square - \square \square = \square \square$

$\square \square - \square \square = \square \square$

$\square \square - \square \square = \square \square$

$\square \square - \square \square = \square \square$

$97 - 60 = \square \square$

$52 - 20 = \square \square$

$83 - 40 = \square \square$

$\square \square - \square \square = \square \square$

$\square \square - \square \square = \square \square$

$\square \square - \square \square = \square \square$

$\square \square - \square \square = \square \square$

$\square \square - \square \square = \square \square$

$\square \square - \square \square = \square \square$

4. Rechne!

$75 - 30 = \square \square$

$46 - 20 = \square \square$

$64 - 30 = \square \square$

$75 - 29 = \square \square$

$46 - 22 = \square \square$

$64 - 29 = \square \square$

$75 - 31 = \square \square$

$46 - 18 = \square \square$

$64 - 28 = \square \square$

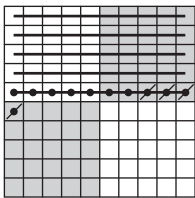


Lösung

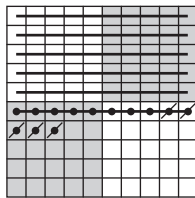
Von einfachen zu schweren Aufgaben (-)



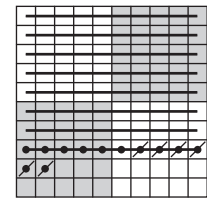
1. Schreibe die Zahl, streiche weg und rechne!



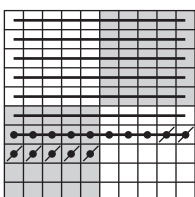
5	1	-	4	=	4	7	
5	1	-	1	4	=	3	7
5	1	-	2	4	=	2	7
5	1	-	3	4	=	1	7
5	1	-	4	4	=		7



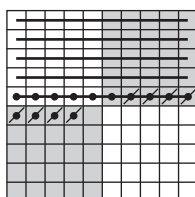
6	3	-	5	=	5	8	
6	3	-	1	5	=	4	8
6	3	-	2	5	=	3	8
6	3	-	3	5	=	2	8
6	3	-	4	5	=	1	8



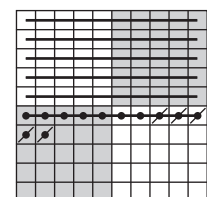
8	2	-	6	=	7	6	
8	2	-	1	6	=	6	6
8	2	-	2	6	=	5	6
8	2	-	3	6	=	4	6
8	2	-	4	6	=	3	6



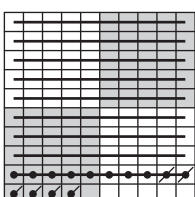
7	5	-	7	=	6	8	
7	5	-	1	7	=	5	8
7	5	-	2	7	=	4	8
7	5	-	3	7	=	3	8



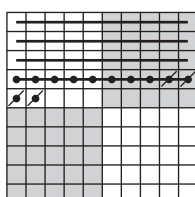
5	4	-	8	=	4	6	
5	4	-	1	8	=	3	6
5	4	-	2	8	=	2	6
5	4	-	3	8	=	1	6



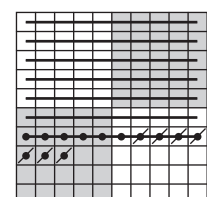
6	2	-	5	=	5	7	
6	2	-	1	5	=	4	7
6	2	-	2	5	=	3	7
6	2	-	3	5	=	2	7



9	4	-	6	=	8	8	
9	4	-	2	6	=	6	8
9	4	-	5	6	=	3	8



4	2	-	4	=	3	8	
4	2	-	3	4	=		8
4	2	-	1	4	=	2	8



7	3	-	7	=	6	6	
7	3	-	4	7	=	2	6
7	3	-	2	7	=	4	6

2. Rechne!

6	1	-	3	=	5	8	
6	1	-	1	3	=	4	8
6	1	-	4	3	=	1	8

5	3	-	5	=	4	8	
5	3	-	3	5	=	1	8
5	3	-	1	5	=	3	8

7	2	-	8	=	6	4	
7	2	-	5	8	=	1	4
7	2	-	2	8	=	4	4



Lösung

Wir rechnen bis 100 (+)

1. Rechne deinen Weg!

$68 + 26 = 94$

*

$58 + 14 = 72$

$33 + 58 = 91$

$55 + 37 = 92$

$65 + 28 = 93$

$24 + 47 = 71$

$44 + 18 = 62$

$69 + 13 = 82$

$35 + 26 = 61$

$78 + 17 = 95$

$56 + 28 = 84$

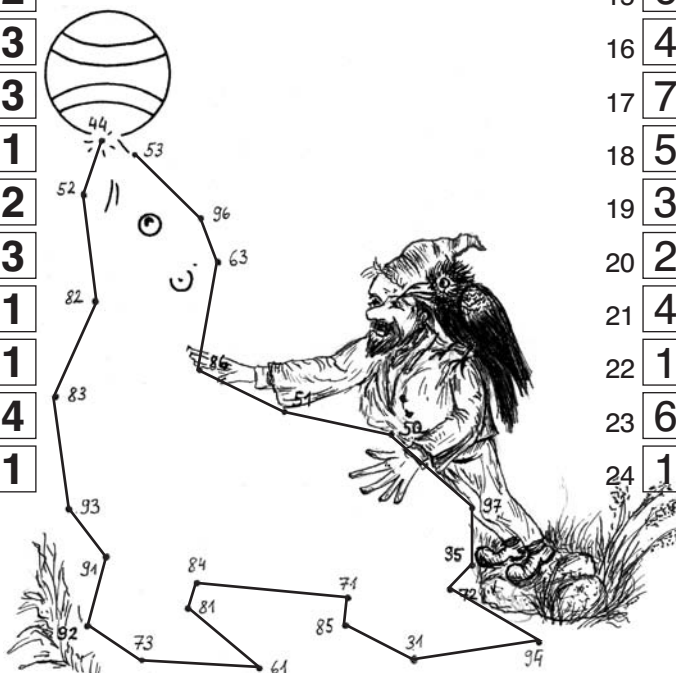
$27 + 56 = 83$

Lösung: 61 – 62 – 71 – 72 – 82 – 83 – 84 – 91 – 92 – 93 – 94 – 95

2. Rechne! Verbinde die Lösungszahlen der Reihe nach!

- 1 $16 + 28 = 44$
- 2 $35 + 17 = 52$
- 3 $48 + 34 = 82$
- 4 $24 + 59 = 83$
- 5 $67 + 26 = 93$
- 6 $73 + 18 = 91$
- 7 $56 + 36 = 92$
- 8 $45 + 28 = 73$
- 9 $27 + 34 = 61$
- 10 $39 + 42 = 81$
- 11 $68 + 16 = 84$
- 12 $54 + 17 = 71$

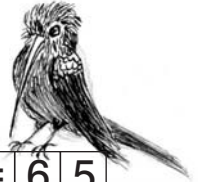
- 13 $37 + 48 = 85$
- 14 $18 + 13 = 31$
- 15 $65 + 29 = 94$
- 16 $46 + 26 = 72$
- 17 $78 + 17 = 95$
- 18 $59 + 38 = 97$
- 19 $34 + 16 = 50$
- 20 $29 + 22 = 51$
- 21 $47 + 39 = 86$
- 22 $19 + 44 = 63$
- 23 $69 + 27 = 96$
- 24 $17 + 36 = 53$



* Verschiedene
Lösungswege möglich!
Keine Lösungsangabe!

Name: Datum:

Wir rechnen Platzhalteraufgaben (+)



1. Rechne! – Vergleiche! Was entdeckst du?

$37 + \square = 53$

$68 + \square = 85$

$26 + \square = 65$

$17 + \square = 53$

$38 + \square = 85$

$46 + \square = 65$

$25 + \square = 74$

$16 + \square = 41$

$38 + \square = 87$

$45 + \square = 74$

$26 + \square = 41$

$68 + \square = 87$

$14 + \square = 62$

$79 + \square = 96$

$16 + \square = 52$

$34 + \square = 62$

$49 + \square = 96$

$26 + \square = 52$

2. Rechne! – Vergleiche! Was entdeckst du?

$36 + \square = 62$

$48 + \square = 84$

$27 + \square = 72$

$36 + \square = 64$

$48 + \square = 85$

$27 + \square = 76$

$36 + \square = 63$

$48 + \square = 82$

$27 + \square = 74$

3. Rechne! – Vergleiche! Was entdeckst du?

$17 + \square = 45$

$56 + \square = 93$

$37 + \square = 52$

$19 + \square = 45$

$54 + \square = 93$

$35 + \square = 52$

$16 + \square = 45$

$58 + \square = 93$

$39 + \square = 52$

4. Rechne! – Vergleiche! Was entdeckst du?

$16 + \square = 73$

$18 + \square = 62$

$17 + \square = 94$

$56 + \square = 73$

$48 + \square = 62$

$57 + \square = 94$

$55 + \square = 73$

$47 + \square = 62$

$58 + \square = 94$

$16 + \square = 74$

$18 + \square = 61$

$17 + \square = 95$

$46 + \square = 74$

$28 + \square = 61$

$47 + \square = 95$

$17 + \square = 85$

$14 + \square = 51$

$18 + \square = 76$

$67 + \square = 85$

$34 + \square = 51$

$58 + \square = 76$

$66 + \square = 85$

$35 + \square = 52$

$59 + \square = 77$

$17 + \square = 84$

$15 + \square = 51$

$19 + \square = 76$

$47 + \square = 84$

$25 + \square = 51$

$39 + \square = 76$



Lösung

Wir rechnen Platzhalteraufgaben (+)



1. Rechne! – Vergleiche! Was entdeckst du?

$37 + 16 = 53$

$68 + 17 = 85$

$26 + 39 = 65$

$17 + 36 = 53$

$38 + 47 = 85$

$46 + 19 = 65$

$25 + 49 = 74$

$16 + 25 = 41$

$38 + 49 = 87$

$45 + 29 = 74$

$26 + 15 = 41$

$68 + 19 = 87$

$14 + 48 = 62$

$79 + 17 = 96$

$16 + 36 = 52$

$34 + 28 = 62$

$49 + 47 = 96$

$26 + 26 = 52$

2. Rechne! – Vergleiche! Was entdeckst du?

$36 + 26 = 62$

$48 + 36 = 84$

$27 + 45 = 72$

$36 + 28 = 64$

$48 + 37 = 85$

$27 + 49 = 76$

$36 + 27 = 63$

$48 + 34 = 82$

$27 + 47 = 74$

3. Rechne! – Vergleiche! Was entdeckst du?

$17 + 28 = 45$

$56 + 37 = 93$

$37 + 15 = 52$

$19 + 26 = 45$

$54 + 39 = 93$

$35 + 17 = 52$

$16 + 29 = 45$

$58 + 35 = 93$

$39 + 13 = 52$

4. Rechne! – Vergleiche! Was entdeckst du?

$16 + 57 = 73$

$18 + 44 = 62$

$17 + 77 = 94$

$56 + 17 = 73$

$48 + 14 = 62$

$57 + 37 = 94$

$55 + 18 = 73$

$47 + 15 = 62$

$58 + 36 = 94$

$16 + 58 = 74$

$18 + 43 = 61$

$17 + 78 = 95$

$46 + 28 = 74$

$28 + 33 = 61$

$47 + 48 = 95$

$17 + 68 = 85$

$14 + 37 = 51$

$18 + 58 = 76$

$67 + 18 = 85$

$34 + 17 = 51$

$58 + 18 = 76$

$66 + 19 = 85$

$35 + 17 = 52$

$59 + 18 = 77$

$17 + 67 = 84$

$15 + 36 = 51$

$19 + 57 = 76$

$47 + 37 = 84$

$25 + 26 = 51$

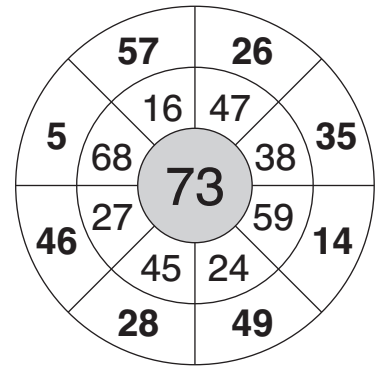
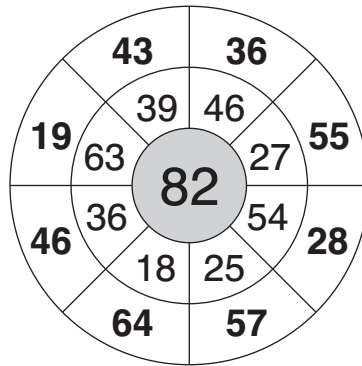
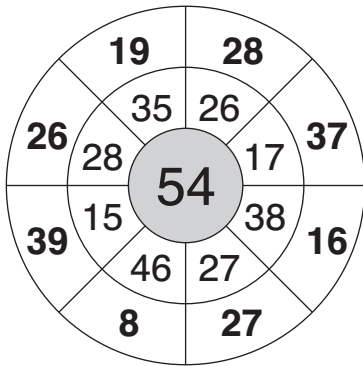
$39 + 37 = 76$



Lösung

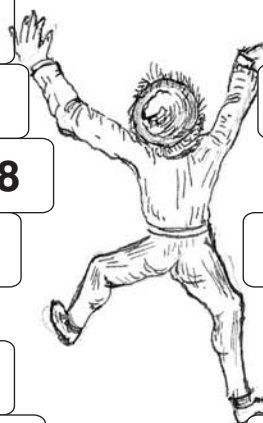
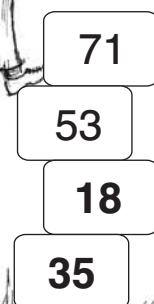
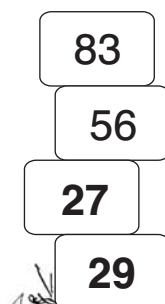
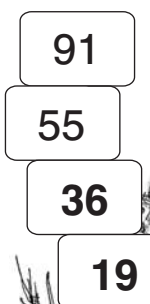
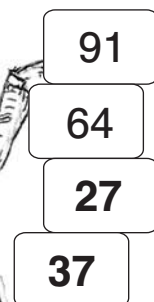
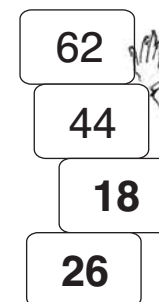
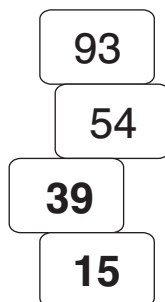
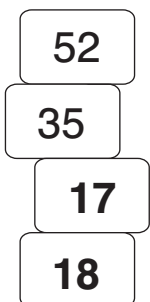
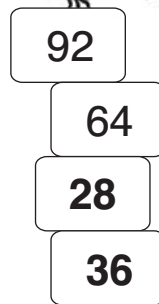
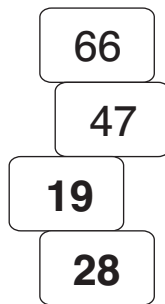
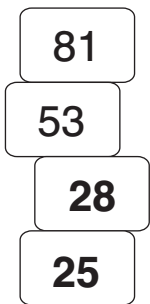
Wir rechnen bis 100 (-)

1. Rechenräder: Ziehe von der Mitte ab!



Lösungszahlen: 5 – 8 – 14 – 16 – 19 – 19 – 26 – 26 – 27 – 28 – 28 – 28 – 35 – 36 – 37 – 39 – 43 – 46 – 46 – 49 – 55 – 57 – 57 – 64

2. Ziehe vom oberen Baustein ab!

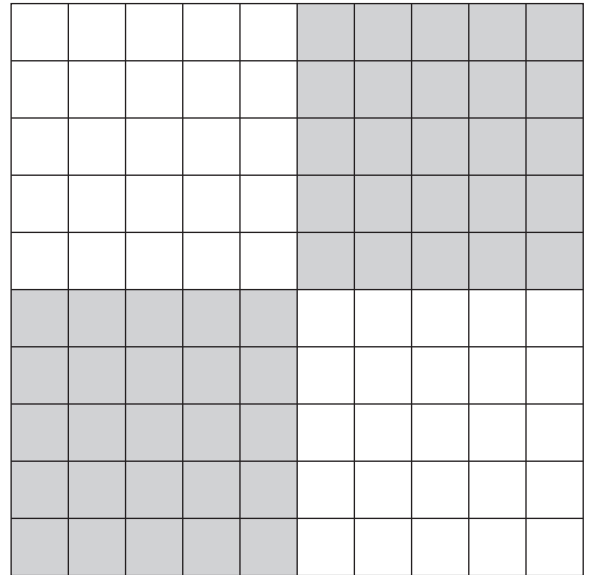


Unterste Steine: 15 – 17 – 17 – 18 – 18 – 18 – 18 – 18 – 19 – 19 – 25 – 26 – 27 – 27 – 28 – 28 – 28 – 29 – 35 – 36 – 36 – 37 – 39 – 47 – 58

Name: Datum:

Plus und minus bis 100

Löse die Aufgaben und male die Lösungszahlen im Hunderterfeld an!



rot

$47 + 27 = \square \square$

$61 - 28 = \square \square$

$26 + 39 = \square \square$

$42 - 18 = \square \square$

$56 + 17 = \square \square$

$91 - 49 = \square \square$

rot

$54 + \square \square = 62$

$85 - \square \square = 57$

$76 + \square \square = 91$

$31 - \square \square = 24$

$67 + \square \square = 85$

$42 - \square \square = 36$

rot

$\square \square + 19 = 70$

$\square \square - 44 = 27$

$\square \square + 46 = 84$

$\square \square - 35 = 26$

$\square \square + 28 = 75$

$\square \square - 57 = 15$

blau

$59 + 29 = \square \square$

$87 - \square \square = 18$

$48 + 38 = \square \square$

$95 - 16 = \square \square$

$\square \square + 14 = 80$

blau

$\square \square + 23 = 82$

$84 - \square \square = 26$

$36 + \square \square = 93$

$\square \square - 19 = 68$

$15 + \square \square = 91$

schwarz

$58 + \square \square = 92$

$62 - \square \square = 39$

$\square \square + 27 = 83$

$\square \square - 49 = 29$

$26 + \square \square = 71$

$84 - 17 = \square \square$

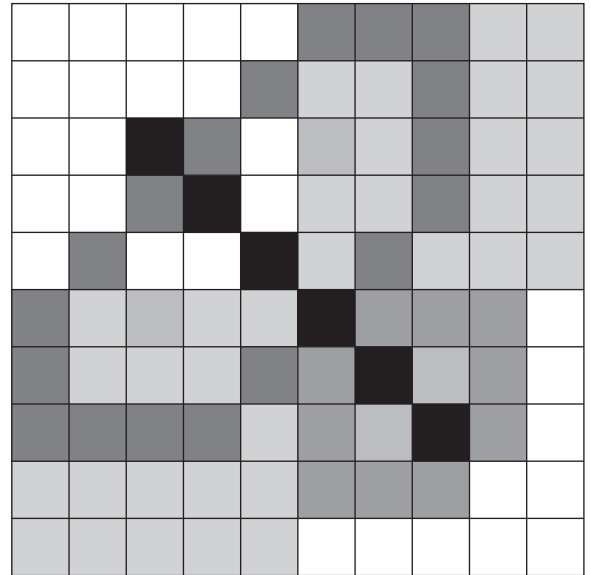
gelb

- Meine Zahl ist um 8 größer als das Doppelte von 9.
- Meine Zahl hat die gleiche Einer- und Zehnerstelle. Sie hat die Quersumme 14.
- Meine Zahl erhalte ich, wenn ich von 100 das Doppelte von 16 abziehe.
- Wenn ich von meiner Zahl 8 abziehe, erhalte ich die Hälfte von 90.

Lösung

Plus und minus bis 100

Löse die Aufgaben und male die Lösungszahlen im Hunderterfeld an!



rot

$$\begin{array}{l} 47 + 27 = 74 \\ 61 - 28 = 33 \\ 26 + 39 = 65 \\ 42 - 18 = 24 \\ 56 + 17 = 73 \\ 91 - 49 = 42 \end{array}$$

rot

$$\begin{array}{l} 54 + \quad 8 = 62 \\ 85 - 28 = 57 \\ 76 + 15 = 91 \\ 31 - \quad 7 = 24 \\ 67 + 18 = 85 \\ 42 - \quad 6 = 36 \end{array}$$

rot

$$\begin{array}{l} 51 + 19 = 70 \\ 71 - 44 = 27 \\ 38 + 46 = 84 \\ 61 - 35 = 26 \\ 47 + 28 = 75 \\ 72 - 57 = 15 \end{array}$$

blau

$$\begin{array}{l} 59 + 29 = 88 \\ 87 - 69 = 18 \\ 48 + 38 = 86 \\ 95 - 16 = 79 \\ 66 + 14 = 80 \end{array}$$

blau

$$\begin{array}{l} 59 + 23 = 82 \\ 84 - 58 = 26 \\ 36 + 57 = 93 \\ 87 - 19 = 68 \\ 15 + 76 = 91 \end{array}$$

schwarz

$$\begin{array}{l} 58 + 34 = 92 \\ 62 - 23 = 39 \\ 56 + 27 = 83 \\ 78 - 49 = 29 \\ 26 + 45 = 71 \\ 84 - 17 = 67 \end{array}$$

gelb

- Meine Zahl ist um 8 größer als das Doppelte von 9. **26**
- Meine Zahl hat die gleiche Einer- und Zehnerstelle. Sie hat die Quersumme 14. **77**
- Meine Zahl erhalte ich, wenn ich von 100 das Doppelte von 16 abziehe. **68**
- Wenn ich von meiner Zahl 8 abziehe, erhalte ich die Hälfte von 90. **53**